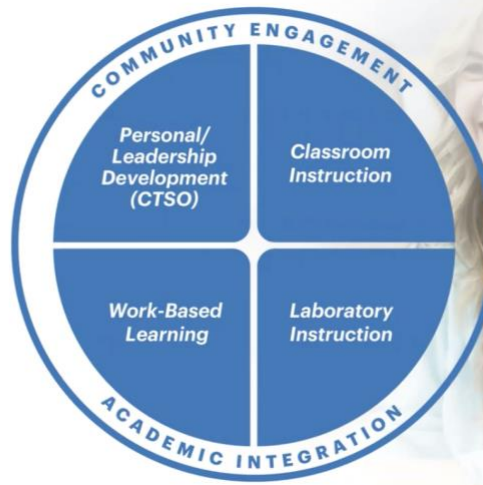


CTE DELIVERY MODEL



Washington ACTE Legislative Focus for CTE in 2024:

- **FUNDING:**
 - Ensure CTE funds are used to fully support approved CTE programs by establishing Required Expenditure Guidelines
 - Retain existing option for maximum of 5% indirect charge.
 - Establish a ceiling for direct charging beyond the 5% indirect charge –
 - Require that carry over CTE funds from year to year to remain under the direction of the CTE Director and allowing their use for capital type projects to meet CTE program's needs, such as improving existing CTE labs and/or facilities.
- **VALUE OF CTE:**
 - **CORE Plus CTE Curriculum expansion for Health Care and others – seeking support for HB 2036**
 - Request PESB to include CTE administration information in Principal/Admin Program Standards
 - Remove the limiting requirement of only middle school 'STEM' CTE courses, thus expanding the CTE options for middle school students.
 - Include 6th grade in the CTE funding calculation and participation.
- **STUDENT LEADERSHIP:**
 - Define student leadership activities within all CTE courses as “intra-curricular” – which is grounded in CTE Model and extending beyond the school day and year to fully support the required student leadership development for all CTE students.