



# OWL GAZETTE



THE OFFICIAL NEWSLETTER OF  
WASHINGTON ASSOCIATION OF AGRICULTURAL EDUCATORS



June 22-26, 2025

Washington State University | Pullman, WA

Join WAAE as we take on Pullman! Enjoy high-quality, relevant professional development workshops, educational tours & events to build community, and actively participate in meetings to make impact in our professional organization!



**> REGISTER NOW**

**>> LEARN MORE**

## IN THIS ISSUE...

WAAE Conference Information.....	1	CASE4Learning Update.....	3
Naches Valley Alumni Charter.....	2	Program Spotlight - Tonasket FFA.....	4-5
Quick & Easy Recipes.....	2	WSU Owlets and Region 1.....	6
WAAE Mentor/Mentee Program.....	2	Grant Opportunities.....	7
Can you Guess Who?.....	3	Upcoming Dates/Job Postings.....	8



On March 29, 2025, in Naches, WA, the Naches FFA Alumni Chapter was chartered during an evening honoring Kailan and Sue Dunn.

Identify (from left to right) the WA Ag Ed Instructors in the photo and receive a reward from Naches Valley Ag Instructor Gerrit VanWeerdhuizen.

[Email Gerrit](#) your answer.



## Quick & Easy Recipes



Sharing Jason Bullock's Mom's popular [Strawberry Pudding](#) from the Carolina Country Magazine.

### Ingredients

- 1 quart sliced fresh strawberries
- ½ cup sugar
- 1 small package Strawberry JELL-O
- 2 small packages vanilla instant pudding
- 3 cups milk (to be used for pudding instead of amount on box)
- 1 cup (8 oz) sour cream
- 1 large (16-ounce) Cool Whip
- 1 box vanilla wafers ([Gluten Free Wafers](#))

### Directions

- Heat strawberries, sugar, and JELL-O just enough to dissolve JELL-O, stirring constantly.
- Follow box directions for mixing pudding, but use 3 cups of milk.
- Add sour cream and fold in ¾ cool whip.
- In a 9 ½ by 13 inch casserole dish, layer wafers, pudding mix, and strawberries.
- Repeat until all ingredients are used.
- Top with remaining Cool Whip.
- ENJOY!

[Submit your recipe idea here!](#)

# MENTOR PROGRAM

WAAE

2025

## MENTORS:

- TEACHERS WITH 8 YEARS EXPERIENCE OR MORE
- WILLING TO COMMUNICATE AND SUPPORT NEW TEACHERS WITH 0-5 YEARS OF EXPERIENCE

WHO ?

## MENTEES:

- TEACHERS WITH 0-5 YEARS EXPERIENCE
- WILLING TO COMMUNICATE AND GET SUPPORT FROM SEASONED TEACHERS

## TEACHER RESOURCE

MENTORS ARE A RESOURCE FOR YOU TO CHECK-IN WITH AND USE AS A SOUNDING BOARD. PROVIDED GUIDANCE ON THINGS AG EDUCATION AND FFA

WHAT ?

WHEN ?

## MONTHLY

MONTHLY CHECK-INS WITH YOUR MENTEES, SOME TIME AT SUMMER CONFERENCE, AND SUPPORT FOR YOU FROM WAAE AS WELL!

## SIGN-UP HERE



[MORE INFO:](#)



HOW ?



# CAN YOU **GUESS** THESE TEACHERS?

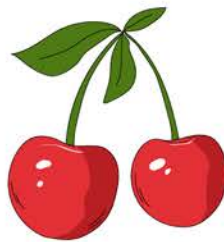
## EARLY CAREER

*This teacher previously worked at a dairy and pulled a calf at this year's fair*



## MID CAREER

*Working in fruit trees, especially Blue Bird Fruit during cherry season, helped pay for college.*



## LATE CAREER

*Known as a legacy teacher, who has taught at the same school their entire career, you may find him successful among the trees.*



to **Alissa Whitaker** for guessing all three categories correctly. We've got some WAAE Swag for you!

Submit your guesses to earn some WAAE swag!

Answers from Winter 2024 Issue

Early Career - Brevin Evenson; Mid-Career - Matt Kline Late Career - Annette Melton



## UPDATE

### Assessments and Credentials through CASE4Learning

CASE 4 Learning has partnered with The Agricultural Experience Tracker (AET) to deliver CASE Student assessments and The National Occupational Competency Testing Institute (NOCTI) to deliver End-of-Course assessments and credentialing.

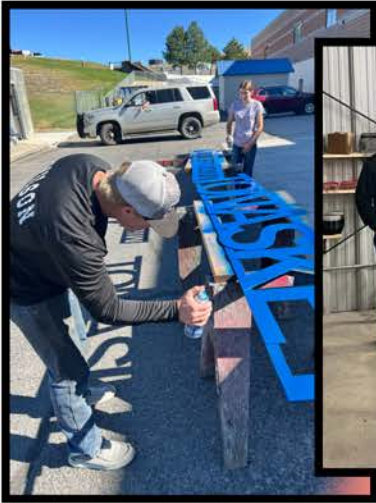
### Vendor Materials in CASE4Learning Course Packages

Check out the new packages that align with specific CASE4Learning Courses.



# PROGRAM SPOTLIGHT

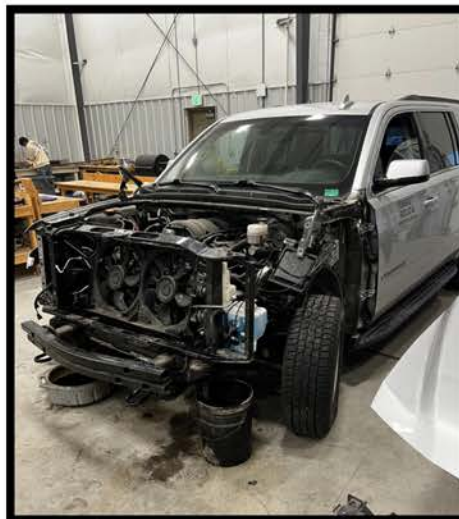
## Tonasket FFA



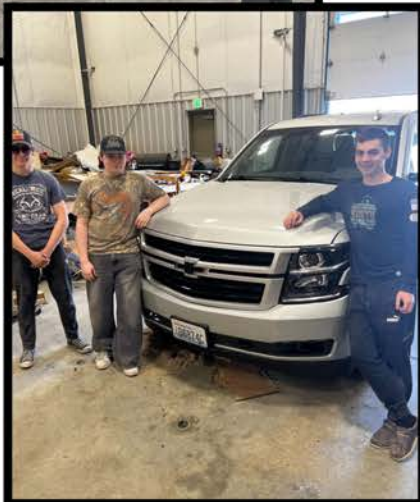
Tonasket Advanced Shop had a community service theme this year and completed numerous passion projects. They used the school's plasma table to make the high school and middle school entrance signs.



Here students are building stage risers for the band.



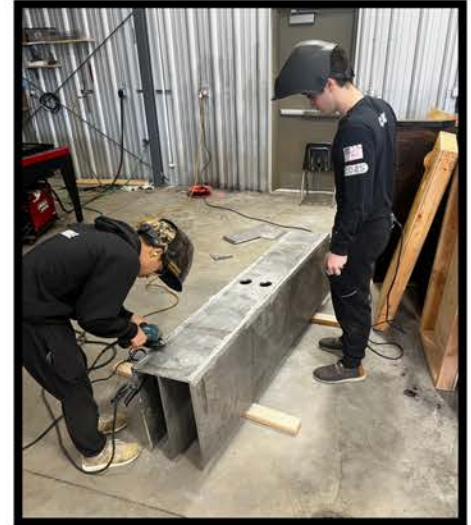
Progress rebuilding (above) and finished product (left) rebuilding the front end of the Ag Department's Suburban which struck a deer heading to a contest.







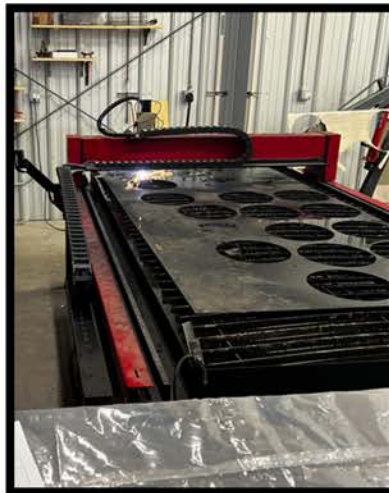
Students are welding a metal box together for the Tonasket Fire Department.



# Living to Serve



Repaired a dirt bike for two boys whose fathered passed away before finishing repairs.



Students made end caps for the benches that will be installed down Main Street. The animals represent a native species in English, Spanish, and Salish



Students used their woodworking skills to make wooden toys for kids at Christmas.





# MEET OUR OWLETS



WASHINGTON STATE  
UNIVERSITY



Nicole Michol  
MS in Agriculture

Kadi Compton  
(Masters in  
Teaching)

Megan  
Ratzsch

L to R: Breanna Short (Dec  
'25), Nick Tanis (MIT: Masters  
in Teaching); Samantha  
Gambonini, Dr. Anna Warner



## NAAE Region 1 Conference

In April, three of our WSU Agriculture Education undergraduate students and one of our graduate students had the opportunity to attend the NAAE Region 1 Conference in Bend, Oregon. These students had the opportunity to develop their leadership skills and gain valuable experience to enhance their teaching techniques and strategies for the future. That's not all, they also had the opportunity to network with fellow ag teachers from all over the Western region and gain very valuable knowledge from these experienced teachers. Last, but certainly not least, the students who attended this conference got to see all the amazing benefits NAAE offers to agriculture teachers.

When asked about this experience, one of the attending students stated,

"The NAAE conference helped me grow as a future educator by providing practical teaching strategies, networking with experienced ag teachers, and gaining insight into current issues in agricultural education." - Alexie Kennedy

We'd like to thank the WA STAR Grant, CAHNRS Senate, and our Cougar Starter donors for helping us fund this trip.



L to R: Jackeline Serrano-  
Rodriguez, Alexis  
Kennedy, Kayley McGhan,  
Hailey Schlosser





# Grant Opportunities

**SAE Grants** - Do you need financial assistance to help start or expand your SAE? A limited number of grants of \$1,000 each are available to current FFA members each year. The online application process opens in October and closes at 8 p.m. EST on Nov 15. Grant recipients are announced in mid-December.



**Smithfield**  
Good food. Responsibly

Smithfield produces good food, the right way, with respect for its people, animals, community and planet. Smithfield partners with local FFA chapters to to increase belonging and engagement; break down financial barriers ; and to support community service projects focused on food insecurity. The program accepts applications on a rolling basis and distributes funds quarterly. [Apply Here after August 1<sup>st</sup>](#)

Nutrien Ag Solutions grant can be used to fund FFA student chapter affiliation fees, plant science-based educational opportunities or to purchase necessary supplies and materials for local agricultural education programs. 2025 Grant deadlines are March 1, June 1 and Sept. 1; each grant application can receive up to \$5,000.

**Nutrien**  
Ag Solutions™

[Apply Here by Sept 1<sup>st</sup>](#)

**TSC TRACTOR SUPPLY CO**

[Apply Here by Sept 1<sup>st</sup>](#)

Legacy Grants, sponsored by Tractor Supply Company, can be used to [create](#) an FFA Alumni and Supporters Chapter, [improve](#) the quality of existing FFA Alumni and Supporters Chapters, or provide more opportunities for [partnership](#) between FFA Chapters and Alumni and Supporters Chapters. Improving grants can be used to fund alumni and supporters annual fees.

The Living to Serve platform empowers every student in every classroom to make a positive impact in their community. FFA provides quality programs, resources, recognition, and opportunities for our members to put their leadership into action through service engagement.



NATIONAL FFA  
LIVING TO SERVE

[Yearlong](#)

[Semester-Long](#)

[Day of Service](#)

Due: June 17, 2025

August 29, 2025

Always Open

# UPCOMING

- June 22-26 WAAE Summer Conference  
Pullman, WA
- July 15 WA FFA Dairy Cattle Evaluation  
Evergreen State Fairgrounds
- July 29-31 WALE/DOT Conferences  
Wenatchee, WA  
[Register by July 1](#)
- August 3-6 WA-ACTE Conference  
Davenport Grant Hotel  
Spokane, WA
- September 29 [Evergreen Tour \(until Oct 2\)](#)
- Oct 29-Nov 1 98<sup>th</sup> National FFA  
Convention & Expo



## [2025 Bluebook Form](#) Update your information



*Let us know what you would like to see in  
the Owl Gazette or provide feedback for  
future issues.*

[Email the Editor!](#)

# JOB OPENINGS

Check out the link above for the  
Agricultural Education Job Openings  
available in Washington!



## **Why Should I become a WAAE Officer?**

- Take an active role in making decisions that impact WAAE members and our state association.
- Develop leadership and communication skills.
- Grow as a professional agriculture educator.
- Increase your instruction and classroom techniques through attending professional development workshops at conferences.
- Increase effectiveness of our state association through service on our executive board.
- Market agricultural education to legislators and business/industry.
- Create a positive public image for WAAE.



WA State Ag Ed  
Resources



WA\_AGEDUCATORS